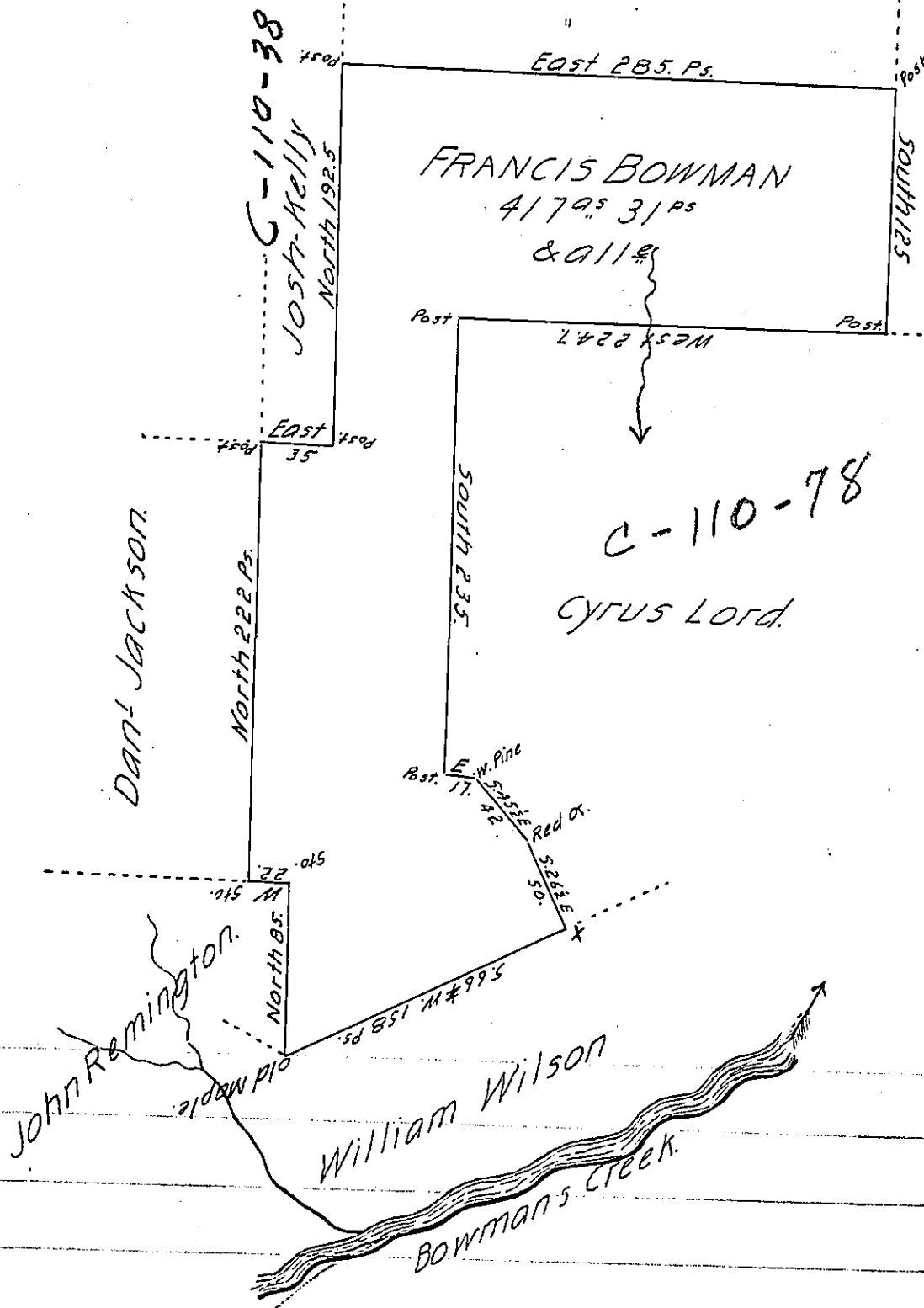


C-127-67

Thomas Lock.



Surveyed the above described tract of Land containing four hundred
 Seventeen acres thirty one perches & 9 on the 15th day of August 1857. For
 Francis Bowman, Situate on the North Side of Bowman's Creek about
 Eight miles up the same in the County of Wyoming by Virtue of his War-
 rant dated September 3^d 1792

To John Rowe Esq^r
 Surveyor General

J. F. Beers, Surveyor
 for Wyoming Co

IN TESTIMONY that the above is a copy of the original remaining on file in
 the Department of Internal Affairs of Pennsylvania, made
 conformably to an Act of Assembly approved the 16th day of
 February, 1833, I have hereunto set my Hand and caused
 the Seal of said Department to be affixed at Harrisburg,
 this tenth day of May 1904.

Isaac P. Pearson
 Secretary of Internal Affairs.